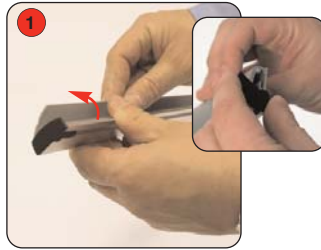


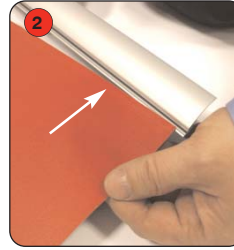
Assembly Instructions



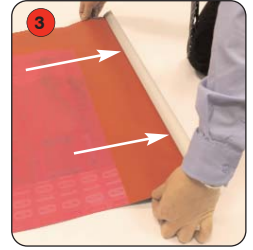
Kit includes: Top rail, Bottom rail /stabilising foot , Bungee pole and carry bag (not shown)



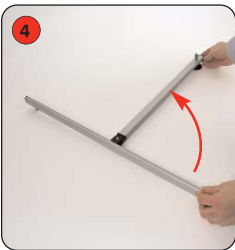
1 Open up the hinged edge on the top rail and twist the end cap to open the rail and insert the graphic.



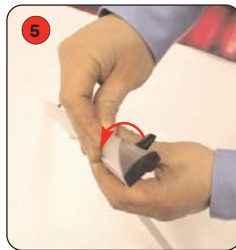
2 Slide the graphic between the hinged edge and the rail through the narrow opening. Snap shut to secure.



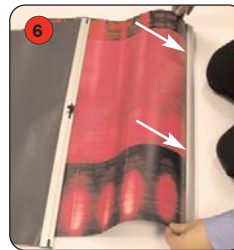
3 Ensure the graphic is pushed securely in all the way along the rail.



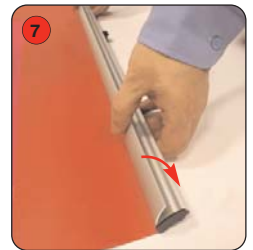
4 Open up the stabilising foot on the bottom rail.



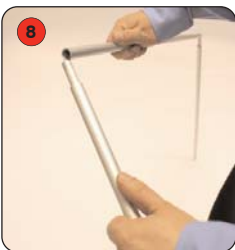
5 Open up the hinged edge on the bottom rail and twist the end cap to open the rail and insert the graphic.



6 Insert the bottom of the graphic into the bottom rail, sliding it through the narrow opening.



7 When the graphic is inserted, snap shut the hinged edge to secure the fit.



8 Open up the bungee pole and connect the 3 parts together.



9 Slot bottom of the bungee pole onto the foot.



10 Finally, bend the bungee pole forward slightly and fit to the top rail.

